

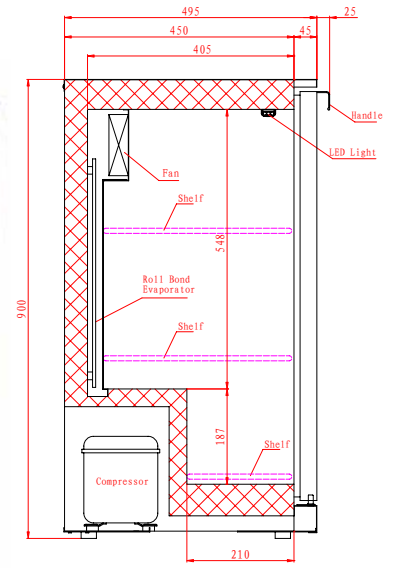
# Bar Bottle Coolers

Stainless Steel, Hinged Door(s)

BAR1SS



BAR2SS



BAR3SS



## FEATURES

Stainless steel front, top and sides painted silver; Aluminium stippled interior

Self closing, double glazed door(s)

2 adjustable shelves per door

Lock fitted as standard

Internal LED illumination

Replaceable door gasket

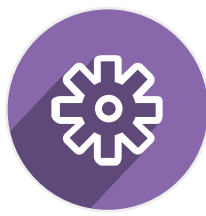
## TECHNICAL SPECIFICATIONS

Controller:	Digital controller with temperature display
Cooling:	Fan assisted
Defrost:	Automatic
Refrigerant:	R600a
Climate Class:	4
Temperature Range:	+4°C ~ +12°C
Power Supply:	13amp

MODEL	DOOR	CAPACITY (Bottles*)	GROSS CAPACITY	EXT. DIMENSIONS (H x W x D mm)	POWER CONSUMPTION	DECIBELS	WEIGHT (kg)	RRP
BAR1SS	1	135	130L	900 x 598 x 520	165W	53dBA	48	
BAR2SS	2	202	200L	900 x 903 x 520	185W	54dBA	65	
BAR3SS	3	338	310L	900 x 1353 x 520	320W	59dBA	95	

\* based on 275ml bottles

Note: fully opened doors increase width by 5mm each side



See page 224 for accessories

